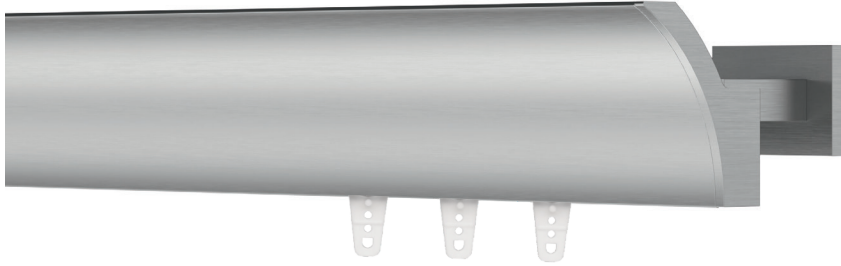


DUBLIN COLLECTION

2" DECORATIVE C RAIL



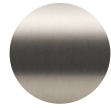
AVAILABLE FINISHES



BK
Black



PC
Polished Chrome



BN
Brushed Nickel

PRODUCT INFORMATION

- Material: Aluminum
- Components material: Brass
- Collection style: Modern/Contemporary
- Max length available in one piece: 228"
- Brackets: Recommended every 3-5 feet depending on fabric weight
- Cannot be curved nor bent
- Splice not recommended for one-way draw

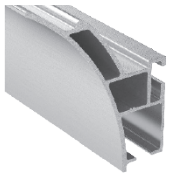
STYLES

- Pinch pleat
- Ripplefold*
- Cubicle
- FlexWave

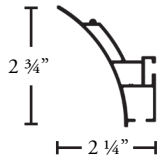
APPLICATIONS

- Center draw
- One-way draw
- Off-center draw

COMPONENTS

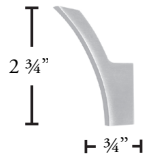


DUB838-XX
Dublin Rail 19.7'



Profile

Finial

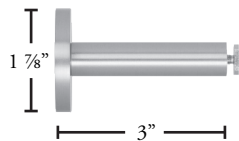


DUB141-SS
End Cap Finial

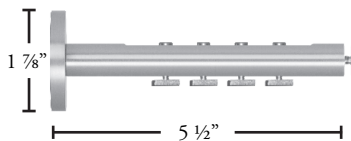
Brackets



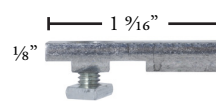
DUB241-SS
Flush Ceiling Bracket



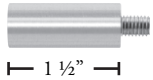
DUB242-SS
Wall Bracket



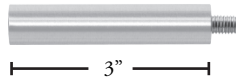
DUB243-SS
Multi Wall Bracket



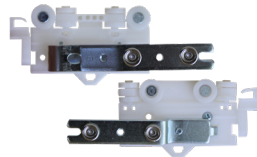
DUB244-SS
Flush Ceiling Bracket



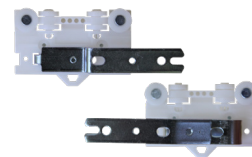
DUB251-SS
Bracket Extension



DUB253-SS
Bracket Extension



RMAS301-WH Over R
RMAS302-WH Under L
Ripplefold Master w/Snaps
and Adaptor



PMAS101-WH Over R
PMAS102-WH Under L
Pinch Pleat Master
Multifunctional



BMAS209-WH Left
BMAS210-WH Right
Butt w/3 Snaps

Other Components



DUB601-SB
Rail Connector



BCAR02-WH
Slim Ball Bearing



END306-WH
End Stop



RCARS60-WH 60% Fullness
RCARS80-WH 80% "
RCARS100-WH 100% "
RCARS120-WH 120% "
2 piece Connected Snap

For more information visit www.angbejar.com